

AT-1104

ALIGNMENT TOOL RANGE			ECCENTRIC SOCKET SIZES				MOTOR APPLICATION RANGE			
Model	Qty in Set	Tool Range	Actuator Socket Required	Qty in Set	Actuator Socket Size	Stud Hole Size	Power Range	AC Motor Frame	DC Motor Frame	
Alignment Tool Sets - Standard										
AT-1104 Set	ATN-1	2	13/16 to 1 5/8 in.	ES-1	2	9/16 in.	3/8 in.	2-30 HP	182-286TS	182A-288A
	ATN-2	2	7/8 to 2 in.	ES-2	2	3/4 in.	1/2 in.			
	ATN-3	2	7/8 to 2 5/8 in.	ES-3	2	15/16 in.	5/8 in.	20-300 HP	324T-449TS	323A-368A
		ES-4		2	1 1/8 in.	3/4 in.				

AT-1108

ALIGNMENT TOOL RANGE			ECCENTRIC SOCKET SIZES				MOTOR APPLICATION RANGE			
Model	Qty in Set	Tool Range	Actuator Socket Required	Qty in Set	Actuator Socket Size	Stud Hole Size	Power Range	AC Motor Frame	DC Motor Frame	
Alignment Tool Sets - Standard										
AT-1108 Set	ATN-1	2	13/16 to 1 5/8 in.	ES-1	2	9/16 in.	3/8 in.	2-30 HP	182-286TS	182A-288A
	ATN-2	2	7/8 to 2 in.	ES-2	2	3/4 in.	1/2 in.			
	ATN-3	2	7/8 to 2 5/8 in.	ES-3	2	15/16 in.	5/8 in.	20-300 HP	324T-449TS	323A-368A
				ES-4	2	1 1/8 in.	3/4 in.			
	ATN-4	2	1 1/2 to 4 1/2 in.	ES-5	2	1 5/16 in.	7/8 in.	300+ HP	5040-505S	403A-448A
ES-6				2	1 1/2 in.	1 in.				
ATN-5	2	1 7/8 to 6 1/8 in.	ES-7	2	1 11/16 in.	1 1/8 in.	300+ HP	400M-8211S	503A-688A	
			ES-8	2	1 7/8 in.	1 1/4 in.				

Алматы (7273)495-231
Архангельск (8182)63-90-72
Астрахань (8512)99-46-04
Барнаул (3852)73-04-60
Белгород (4722)40-23-64
Брянск (4832)59-03-52
Владивосток (423)249-28-31
Волгоград (844)278-03-48
Вологда (8172)26-41-59
Воронеж (473)204-51-73
Екатеринбург (343)384-55-89
Иваново (4932)77-34-06

Ижевск (3412)26-03-58
Иркутск (395)279-98-46
Казань (843)206-01-48
Калининград (4012)72-03-81
Калуга (4842)92-23-67
Кемерово (3842)65-04-62
Киров (8332)68-02-04
Краснодар (861)203-40-90
Красноярск (391)204-63-61
Курск (4712)77-13-04
Липецк (4742)52-20-81

Магнитогорск (3519)55-03-13
Москва (495)268-04-70
Мурманск (8152)59-64-93
Набережные Челны (8552)20-53-41
Нижний Новгород (831)429-08-12
Новокузнецк (3843)20-46-81
Новосибирск (383)227-86-73
Омск (3812)21-46-40
Орел (4862)44-53-42
Оренбург (3532)37-68-04
Пенза (8412)22-31-16

Пермь (342)205-81-47
Ростов-на-Дону (863)308-18-15
Рязань (4912)46-61-64
Самара (846)206-03-16
Санкт-Петербург (812)309-46-40
Саратов (845)249-38-78
Севастополь (8692)22-31-93
Симферополь (3652)67-13-56
Смоленск (4812)29-41-54
Сочи (862)225-72-31
Ставрополь (8652)20-65-13

Сургут (3462)77-98-35
Тверь (4822)63-31-35
Томск (3822)98-41-53
Тула (4872)74-02-29
Тюмень (3452)66-21-18
Ульяновск (8422)24-23-59
Уфа (347)229-48-12
Хабаровск (4212)92-98-04
Челябинск (351)202-03-61
Череповец (8202)49-02-64
Ярославль (4852)69-52-93

Киргизия (996)312-96-26-47

Россия (495)268-04-70

Казахстан (7172)727-132



M-AT-1104

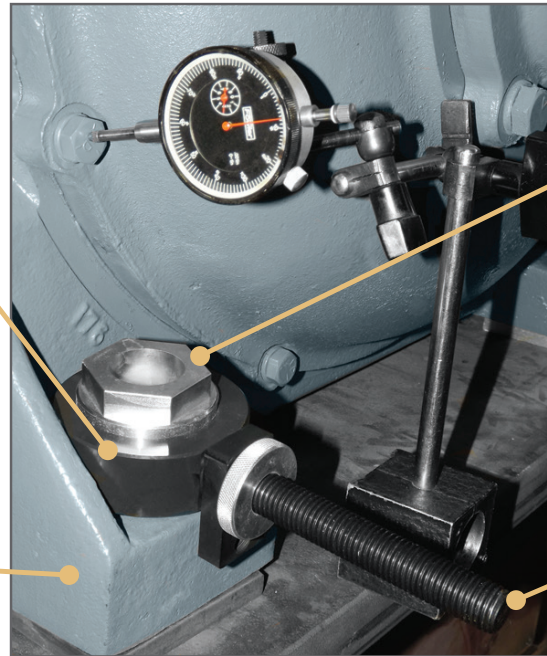
ALIGNMENT TOOL RANGE				ECCENTRIC SOCKET SIZES				MOTOR APPLICATION RANGE		
Model	Qty in Set	Tool Range	Actuator Socket Required	Qty in Set	Actuator Socket Size	Stud Hole Size	Power Range	AC Motor Frame	DC Motor Frame	
Alignment Tool Sets - Metric										
M-AT1104 Set	ATN-1	2	21 to 42 mm	MES-1	2	13 mm	8 mm	1-22 kW	80-132	132-180
	ATN-2	2	22 to 51 mm	MES-2	2	17 mm	10 mm			
	ATN-3	2	22 to 67 mm	MES-3	2	19 mm	12 mm	14-224 kW	160-225	200-225
				MES-4	2	24 mm	16 mm			

M-AT-1108

ALIGNMENT TOOL RANGE				ECCENTRIC SOCKET SIZES				MOTOR APPLICATION RANGE		
Model	Qty in Set	Tool Range	Actuator Socket Required	Qty in Set	Actuator Socket Size	Stud Hole Size	Power Range	AC Motor Frame	DC Motor Frame	
Alignment Tool Sets - Metric										
M-AT1108 Set	ATN-1	2	21 to 42 mm	MES-1	2	13 mm	8 mm	1-22 kW	80-132	132-180
	ATN-2	2	22 to 51 mm	MES-2	2	17 mm	10 mm			
	ATN-3	2	22 to 67 mm	MES-3	2	19 mm	12 mm	14-224 kW	160-225	200-225
				MES-4	2	24 mm	16 mm			
	ATN-4	2	38 to 114 mm	MES-5	2	30 mm	20 mm	224+ kW	250-355	250-355
				MES-6	2	36 mm	24 mm			
ATN-5	2	48 to 156 mm	MES-7	2	46 mm	30 mm	224+ kW	400	400	

Easy on easy off design

Precise, smooth, easy motor foot movement

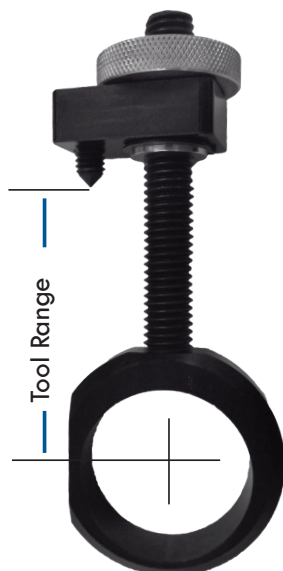


Eccentric socket

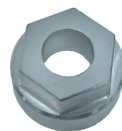
Fully adjustable

Portable SIDE ALIGN sets make aligning your motors, pumps, and gear boxes safe, quick, easy and to the tolerances you demand. Eliminate the use of jack bolts, frames and heavy hammers.

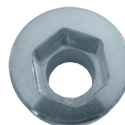
Alignment Tool



Eccentric Socket



Top View



Bottom View

HORIZONTAL ALIGNMENT TOOL SET

Instruction Sheet

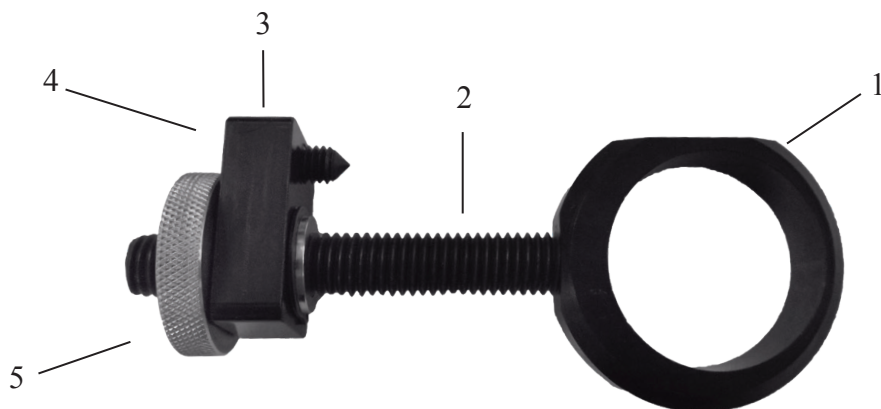
Instructions:

1. Loosen securing bolts (or stud bolt nuts) approximately one full turn.
2. Place alignment tool and eccentric socket over bolt head with reference mark on eccentric socket toward knurled nut.
3. Tighten knurled nut so contact is made between foot edge and allen screw.
4. Rotate the eccentric socket one-half turn or until desired position has been reached.
5. Repeat steps 2, 3 and 4 as necessary to achieve desired alignment.

Precise coupling end gap adjustment and horizontal adjustment is made easy by using POSI LOCK Horizontal Alignment Tool.

**ALWAYS READ THE MANUFACTURER'S INSTRUCTIONS BEFORE
PRODUCT USE.**

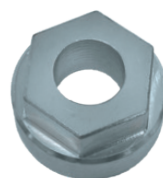
HORIZONTAL ALIGNMENT PARTS LIST



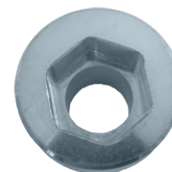
ITEM	ATN-1	ATN-2	ATN-3	ATN-4	ATN-5
1. Eccentric Ring	N-101	N-201	N-301	N-401	N-501
2. Adjustment Shaft	N-103	N-103	N-303	N-403	N-503
3. Allen Screw	N-104	N-104	N-304	N-404	N-504
4. Adjustment Plate	N-105	N-105	N-305	N-405	N-505
5. Knurled Nut	N-106	N-106	N-306	N-406	N-506

ECENTRIC SOCKETS

MODEL	SIZE
ES-1	9/16"
ES-2	3/4"
ES-3	15/16"
ES-4	1 1/8"
ES-5	1 5/16"
ES-6	1 1/2"
ES-7	1 11/16"
ES-8	1 7/8"



Top View



Bottom View

Алматы (7273)495-231
 Архангельск (8182)63-90-72
 Астрахань (8512)99-46-04
 Барнаул (3852)73-04-60
 Белгород (4722)40-23-64
 Брянск (4832)59-03-52
 Владивосток (423)249-28-31
 Волгоград (844)278-03-48
 Вологда (8172)26-41-59
 Воронеж (473)204-51-73
 Екатеринбург (343)384-55-89
 Иваново (4932)77-34-06

Ижевск (3412)26-03-58
 Иркутск (395)279-98-46
 Казань (843)206-01-48
 Калининград (4012)72-03-81
 Калуга (4842)92-23-67
 Кемерово (3842)65-04-62
 Киров (8332)68-02-04
 Краснодар (861)203-40-90
 Красноярск (391)204-63-61
 Курск (4712)77-13-04
 Липецк (4742)52-20-81

Магнитогорск (3519)55-03-13
 Москва (495)268-04-70
 Мурманск (8152)59-64-93
 Набережные Челны (8552)20-53-41
 Нижний Новгород (831)429-08-12
 Новокузнецк (3843)20-46-81
 Новосибирск (383)227-86-73
 Омск (3812)21-46-40
 Орел (4862)44-53-42
 Оренбург (3532)37-68-04
 Пенза (8412)22-31-16

Пермь (342)205-81-47
 Ростов-на-Дону (863)308-18-15
 Рязань (4912)46-61-64
 Самара (846)206-03-16
 Санкт-Петербург (812)309-46-40
 Саратов (845)249-38-78
 Севастополь (8692)22-31-93
 Симферополь (3652)67-13-56
 Смоленск (4812)29-41-54
 Сочи (862)225-72-31
 Ставрополь (8652)20-65-13

Сургут (3462)77-98-35
 Тверь (4822)63-31-35
 Томск (3822)98-41-53
 Тула (4872)74-02-29
 Тюмень (3452)66-21-18
 Ульяновск (8422)24-23-59
 Уфа (347)229-48-12
 Хабаровск (4212)92-98-04
 Челябинск (351)202-03-61
 Череповец (8202)49-02-64
 Ярославль (4852)69-52-93

Киргизия (996)312-96-26-47

Россия (495)268-04-70

Казахстан (7172)727-132